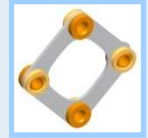


# Replacing hub at 10/951.441



1. Unscrew bolt #6 (with allen key through facial bores in hub)
2. Unscrew bolt #5 and remove disk pack from hub
3. Replace hub
4. Mount disk pack to hub by screwing in bolt #5 into tapped holes in hub. Take care that bolt #6 are in place. Disk pack, bolt and washer needs to be arranged like picture shown right.
5. Tighten with 8.5 Nm (torque wrench)
6. Mount hub to connecting plate by screwing in bolt #6 into connecting plate (through facial bores in hub)
7. Tighten with 8.5 Nm (torque wrench)
8. Please use installation and operating instruction for more information.

